

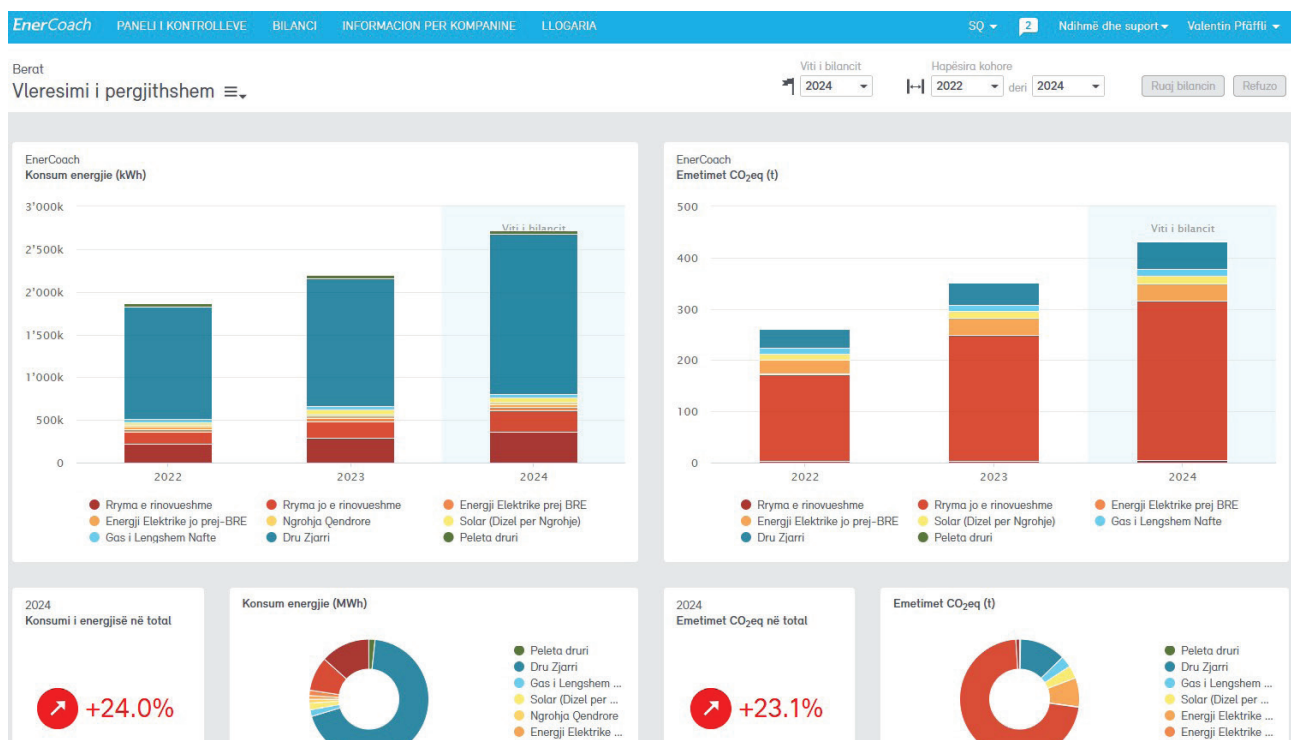


SEMP FACTSHEET - ENERCOACH

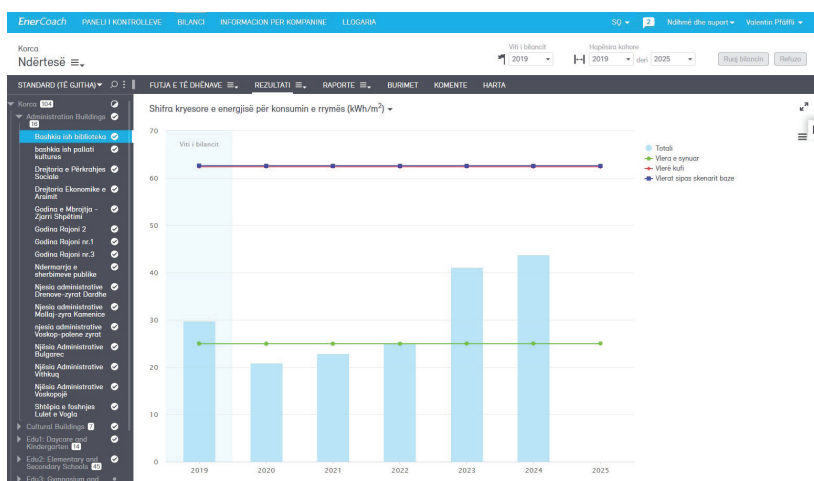
SEMP introduces energy accounting software EnerCoach to Albania

What is EnerCoach

The Smart Energy Municipalities Project (SEMP) is introducing the **EnerCoach** software for Albanian municipalities. **Enercoach** is a performance management software developed by the Swiss company ECOSPEED. This easy-to-use and effective tool enables the municipality to collect, manage and analyse all relevant energy data (heat and electricity), as well as CO2 emissions in municipal buildings and facilities, such as public lighting.



Adapted to Albanian needs

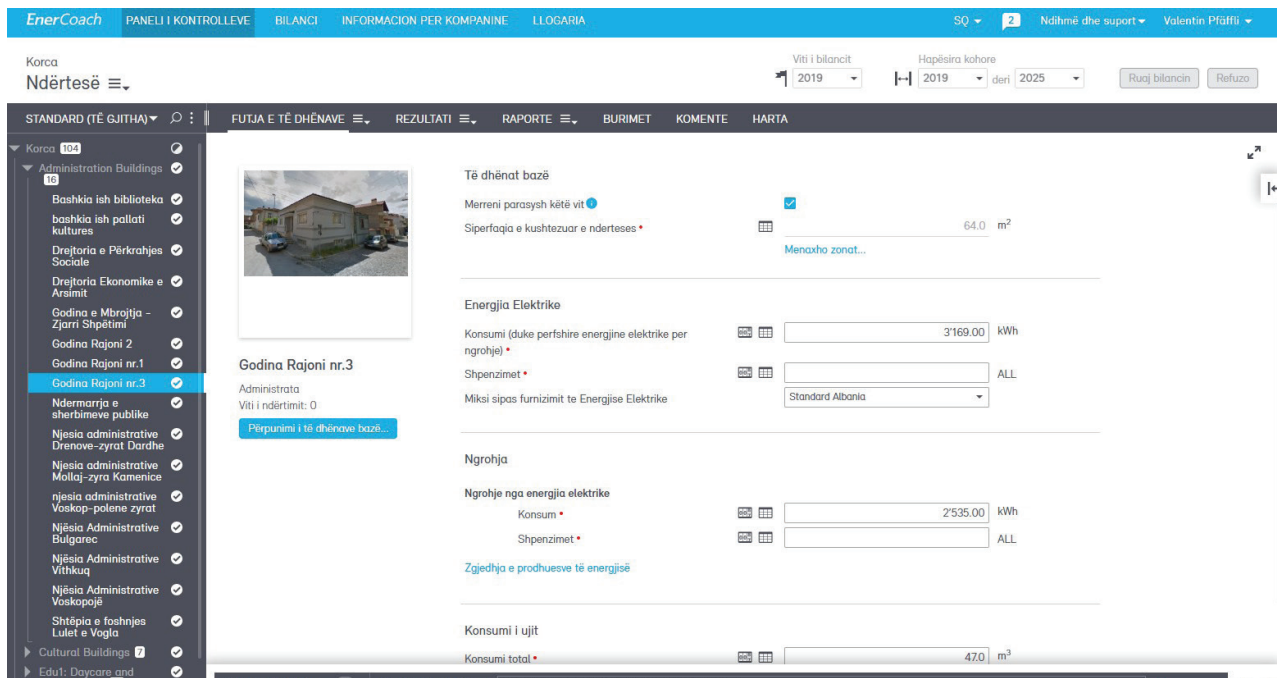


In cooperation with ECOSPEED, SEMP adapted **EnerCoach** to the local context. The platform is translated to Albanian language and data entry is adapted to national circumstances.

The software provides for baseline value of a building considering its characteristics and climate zone, as well as the target consumption after renovation. This allows to better understand the municipal building stock and guide investment planning and prioritization of buildings.

How does it work?

Every municipality, in which SEMP is active, obtains access to the cloud based software EnerCoach. All municipal buildings are included in the inventory including information on the location, surface, type of building and its characteristics, such as e.g services and technologies. Then the data on real energy consumption is included for the last three years as well as continuously on a yearly basis facilitating regular reporting.



The screenshot shows the EnerCoach web application interface. The top navigation bar includes 'EnerCoach', 'PANELI I KONTROLLEVE', 'BILANCI', 'INFORMACION PER KOMPANINE', 'LLOGARIA', 'SQ', 'Ndhmë dhe suport', and 'Valentin Pflüßli'. The main content area displays a building profile for 'Godina Rajoni nr.3' with a photo and details like 'Administrata' and 'Viti i ndërtimit: 0'. The 'Të dhënat bazë' section shows 'Sipërfaqja e kushtezuar e ndërtesës' as 64.0 m². The 'Energjia Elektrike' section shows 'Konsumi (duke përfshirë energjinë elektrike për ngrohje)' as 3'169.00 kWh and 'Shpenzimet' as ALL. The 'Ngrrohja' section shows 'Ngrrohje nga energjia elektrike' with 'Konsum' at 2'535.00 kWh and 'Shpenzimet' at ALL. The 'Konsumi i ujit' section shows 'Konsumi total' as 47.0 m³. A sidebar on the left lists various building types like 'Bashkia ish biblioteka', 'Drejtoria e Përkrahjes Sociale', etc.

EnerCoach shows the energy condition of the buildings and how consumption, emissions and costs develop over time. At the same time, it enables planning of renovation measures and the subsequent monitoring of energy savings after renovation.

What are the benefits of EnerCoach?

- ▶ Customized to the needs and established software for performance monitoring of public buildings and street lighting.
- ▶ Basis for good planning and access to finance.
- ▶ Energy cost management enabling savings in the municipal budget.
- ▶ Reporting tool (Municipal Council, Agency for Energy Efficiency).
- ▶ Cloud based collaboration & support (also by international consultants).
- ▶ Allows quality assurance and calibration of data.
- ▶ EnerCoach provides a good basis for renovation concepts incl. facilitation of access to finance.
- ▶ Monitoring the results of energy saving measures.

What is the Smart Energy Municipalities Project (SEMP)?

SEMP is a project of the Ministry of Infrastructure and Energy (MoIE) and of the National Agency of Energy Efficiency (AEE) supported by the Swiss State Secretariat for Economic Affairs (SECO).



Schweizerische Eidgenossenschaft
Confédération suisse
Confederazione Svizzera
Confederaziun svizra

State Secretariat for Economic Affairs SECO

